

RUNNING MATLAB PROGRAMS IN FLIR RESEARCHIR MAX



Initial Setup:

- Install the latest Matlab software from The MathWorks web page. Activate your license for Matlab. For Questions, see (www.mathworks.com).
- Launch Matlab

Running Matlab programs in ResearchIR:

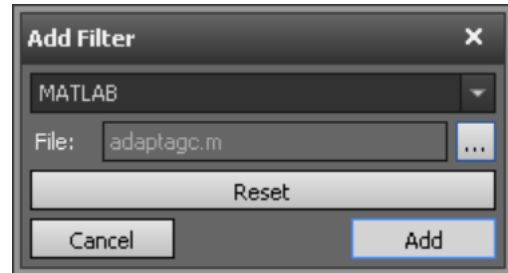
- Launch ResearchIR and either open data you want to analyze or connect to a camera for live streaming analysis.
- From the Tools section in ResearchIR, select to "Add a Filter".



- Next from the drop down box, select "Matlab"



- Then go find and choose your Matlab program from the file selection and then click the "Add" button. In this example, my program is called "adaptagc.m"



- When you first add the Matlab filter, it automatically launches a Matlab engine in the background. This can take multiple seconds; so be patient to let it open and load fully.
- Once Matlab engine has launched in the background, the filter should now be added to your imagery currently loaded and playing back in ResearchIR. My program applies an Adaptive AGC filter to enhance color contrast. Here are before and after images as an example:

Image before the filter:

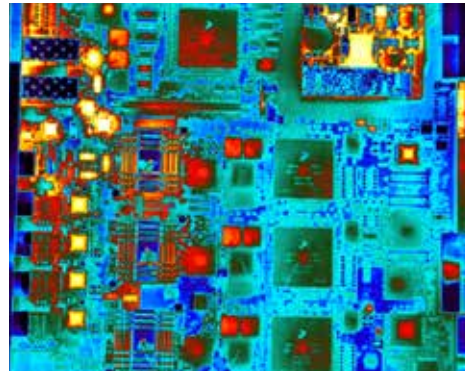


Image After the filter:

